

HomeRigHouse™

Rabbit Cage Set Up (#21700, 21701, 21702)

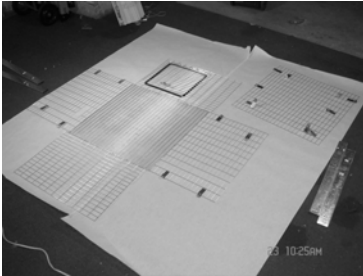


Fig A

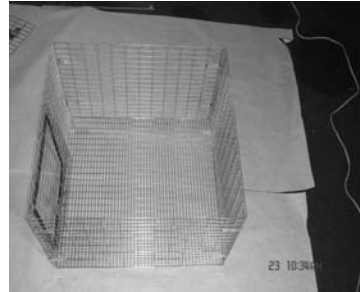


Fig B

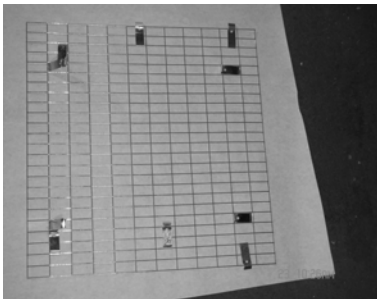


Fig C



Fig D

1. Lay cage out flat. (Fig. A.)
2. Fold up all sides and rear panel. Bend clasps around vertical wires to fasten. (Fig. B.)
3. Position the top panel. (Fig. C.)
4. Bend top panel clasps around upper wire. (Fig. D.)